

Fleurieu Cranes Pty. Ltd.

ABN: 41 194 245 774 ACN: 119 534 244

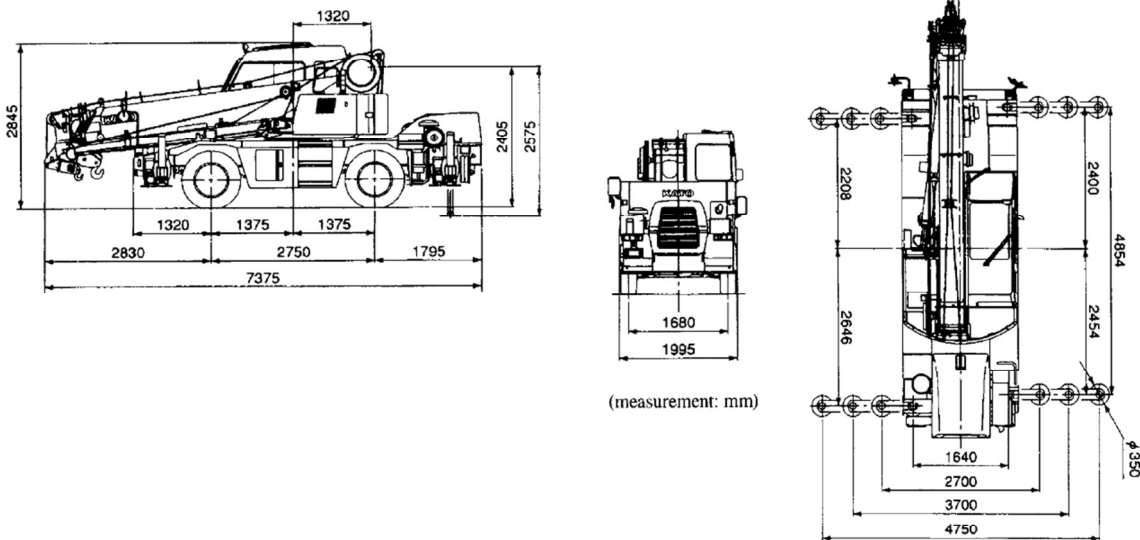
Phone: 8347 2777 Fax: 8345 3677 Mobile: 0401 366 399
 service@fleurieucranes.com.au

34 Wingfield Road, Wingfield SA 5013



KRM-13H Rough Terrain City Crane

Dimensions - Gross Weight 13.235T



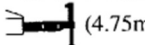
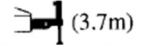
MASS LIMITS PERMITTED

Gross Combination Mass shall not exceed 14.00 tonnes

Unit Position	Axle Position	Spacing To Forward Axle	Overall Tyre Contact Width	Tyres per Axle	Axle Group Position	Maximum Axle Group Mass
1	1	0.00 m	1.93 m	2	1	7.00 t
	2	2.75 m	1.94 m	2	2	7.00 t

13T Kato KRM-13H Rough Terrain City Crane

Rated Lifting Capacity Table (1)

5.30m ~ 24.0m Boom												
Working Radius (m)	 (4.75m)						 (3.7m)					
	Outriggers Fully Extended (360° Full Range)						Outriggers Intermediately Extended (Over Side)					
	5.3m Boom	9.04m Boom	12.78m Boom	16.52m Boom	20.26m Boom	24.0m Boom	5.3m Boom	9.04m Boom	12.78m Boom	16.52m Boom	20.26m Boom	24.0m Boom
1.5	13.00	6.00	6.00				12.00	6.00	6.00			
1.7	13.00	6.00	6.00				12.00	6.00	6.00			
2.0	12.00	6.00	6.00	5.00			12.00	6.00	6.00	5.00		
2.5	10.00	6.00	6.00	5.00			10.00	6.00	6.00	5.00		
3.0	8.20	6.00	6.00	5.00	4.70		8.20	6.00	6.00	5.00	4.70	
3.5	7.00	6.00	6.00	5.00	4.70	3.20	7.00	6.00	6.00	5.00	4.70	3.20
4.0	6.10	6.00	6.00	5.00	4.70	3.20	6.10	6.00	6.00	5.00	4.70	3.20
4.5		5.50	5.40	5.00	4.50	3.20		5.00	5.00	5.00	4.50	3.20
5.0		5.00	4.90	4.60	4.05	3.20		4.30	4.30	4.40	4.05	3.20
5.5		4.50	4.40	4.20	3.70	3.20		3.70	3.60	3.80	3.70	3.20
6.0		4.10	4.00	3.80	3.40	3.00		3.10	3.10	3.30	3.30	3.00
6.5		3.70	3.65	3.50	3.15	2.80		2.70	2.65	2.85	2.90	2.75
7.0		3.35	3.30	3.20	2.90	2.60		2.30	2.30	2.50	2.60	2.50
8.0		^{2.70} _(7.7m)	2.70	2.70	2.50	2.25		^{1.85} _(7.7m)	1.75	1.90	2.00	2.10
9.0			2.20	2.30	2.20	1.95			1.35	1.50	1.60	1.70
10.0			1.80	1.90	1.95	1.75			1.05	1.20	1.30	1.40
11.0			1.45	1.60	1.75	1.55			0.80	1.00	1.10	1.15
12.0			^{1.30} _(11.4m)	1.40	1.50	1.40			^{0.65} _(11.4m)	0.80	0.90	0.95
13.0				1.20	1.30	1.25				0.60	0.75	0.80
14.0				1.00	1.10	1.15				0.45	0.60	0.65
15.0				0.85	0.95	1.00				0.35	0.45	0.55
16.0					0.80	0.90					0.35	0.45
17.0					0.70	0.80					0.25	0.35
18.0					0.60	0.68						0.25
19.0					^{0.50} _(18.8m)	0.58						
20.0						0.48						
21.0						0.40						
22.0						0.35						
22.5						0.32						
Critical Boom Angle	-	-	-	-	-	-	-	-	-	-	23°	36°
Standard Hook	13t Hook						13t Hook					
Hook Weight	90 kg						90 kg					
Parts of Line	8	4	4	4	4	4	8	4	4	4	4	4

(unit: metric ton)